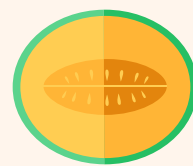


Que sementes devo plantar em cada estação do ano?

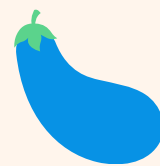
Primavera



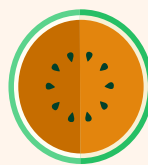
Melão



Couve-flor



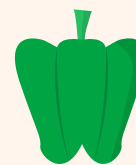
Berinjela



Melancia

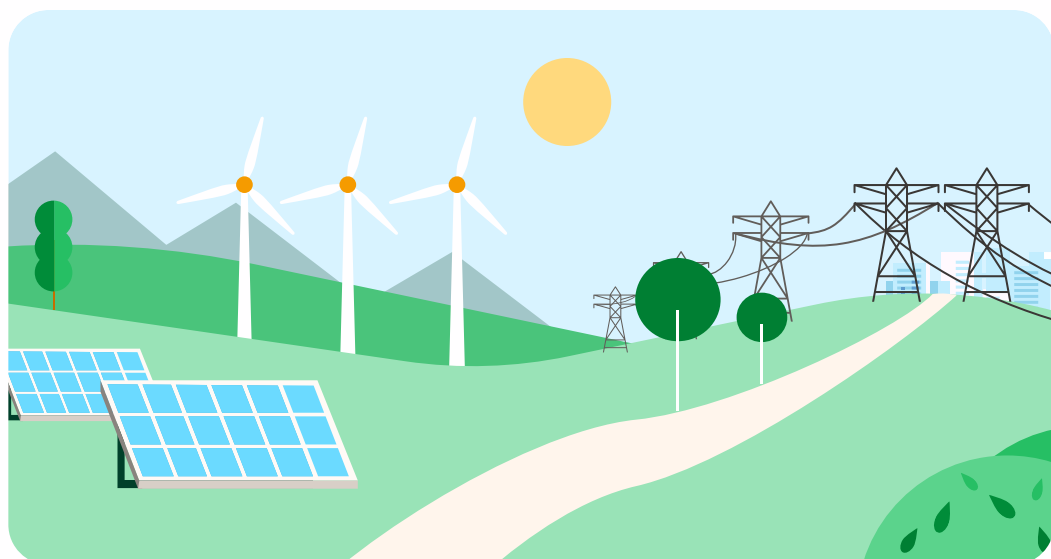


Pepino



Pepimentões

Verão



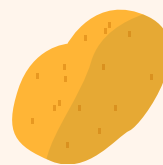
Rúcula



Couve Kale



Alcachofra



Batata



Alface



Brócolis

Outono



Acelga



Cebola



Cenoura



Rabanete

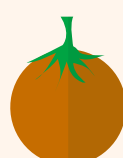


Repolho



Aipo

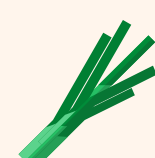
Inverno



Tomate



Espinafre



Alho-poró



Funcho



Couve-flor



Cebolinha

Fonte: Bioguía.