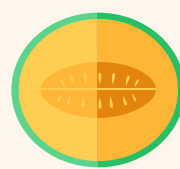


¿Qué semillas planto según la estación del año?

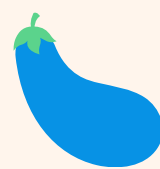
Primavera



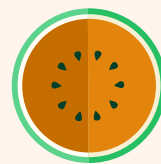
Melón



Coliflor



Berenjena



Sandía

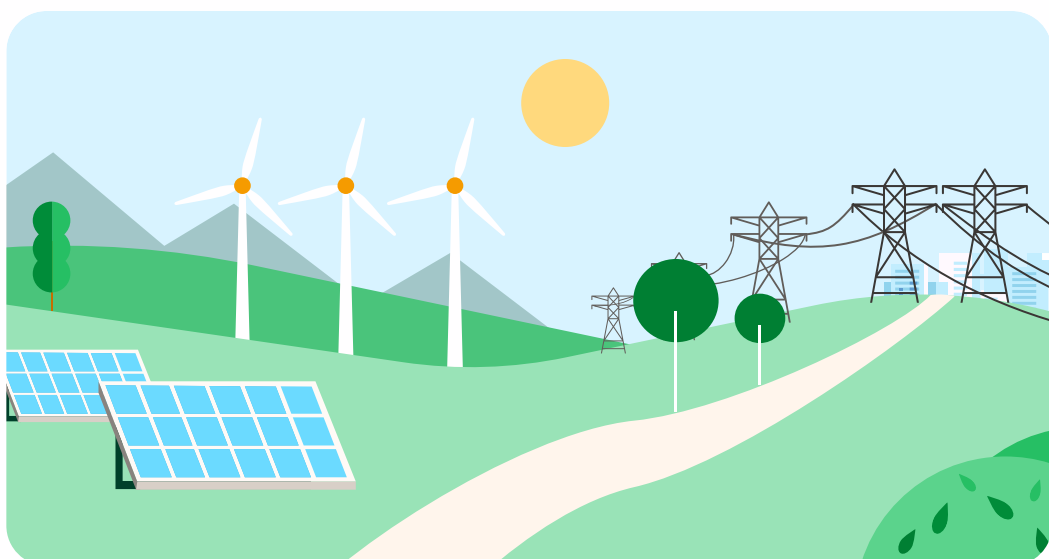


Pepino



Pimientos

Verano



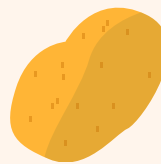
Rúcula



Kale



Alcachofa



Patata



Lechuga



Brócoli

Otoño



Acelga



Cebolla



Zanahoria



Rábano

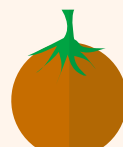


Repollo



Apio

Invierno



Tomate



Espinaca



Puerro



Hinojo



Coliflor



Cebollín

Fuente: Bioguía.