

# Keys to personal data processing

as an [www.iberdrola.com](http://www.iberdrola.com) user

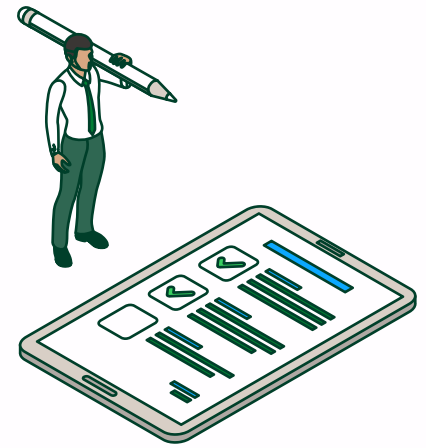
## Our commitment

- 1 Your personal information will be processed **legally, faithfully and transparently** in accordance with the applicable personal data protection regulation in force at any given time.



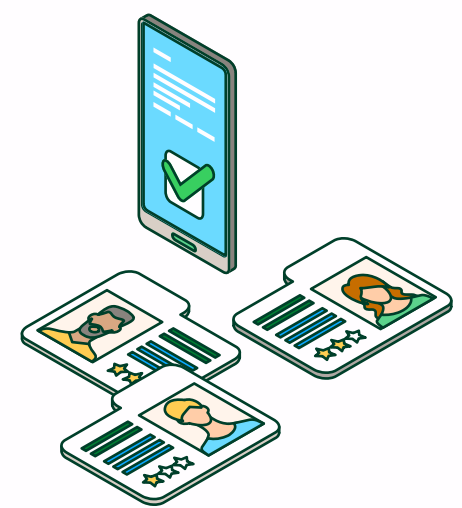
## How do we collect your personal data?

- 2 Through the data you provide us with when browsing the website, in **forms** you fill on the website or through the different **e-mail accounts** that Iberdrola makes available on its website for contact purposes.



## What will we process your data for?

- 3
- Respond to queries or **requests for information**
  - Publish third-party content of professional interest.
  - To customize and improve the tools and **functionalities of the website.**
  - To send **notifications and newsletters** through different electronic devices.
  - For any other purpose required or permitted by the applicable law or for which you have given your consent.



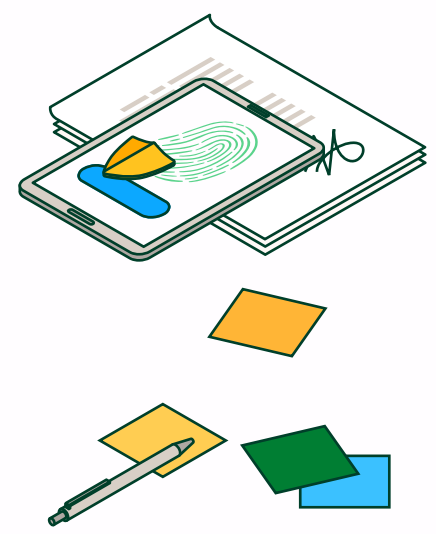
## Who will be able to access your personal data?

- 4
- **Authorized personnel of Iberdrola** subject to the applicable data protection laws.
  - **Official bodies** or third parties in accordance with the applicable legislation.
  - **External service providers**, with whom we have signed the legally required contracts.



## What are your data protection rights?

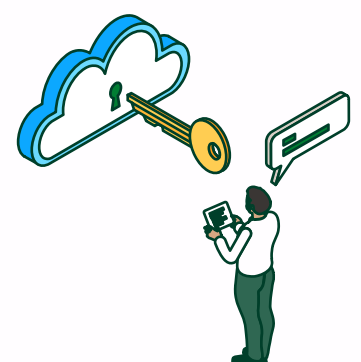
- 5
- Right to request **access** to personal data.
  - Right to request **rectification** if the data are inaccurate or complete the data that it is incomplete
  - Right to request **erasure** of your data.
  - Right to request **restriction** of processing.
  - Right to **object** to processing.
  - Right to data **portability.**
  - Right not to be subject to a decision based solely on the **automated processing** of your personal data.



To exercise your rights, you must send a written communication to the following postal address: Dirección Canales Digitales y Web. Tomás Redondo 1, 28033 Madrid, or to the e-mail address [scdc@iberdrola.com](mailto:scdc@iberdrola.com), including in both cases a photocopy of your ID card or other equivalent identification document.

## Information security

- 6 We have taken **technical measures** to protect your data and information and developed **procedures** to intercept any data security incident.



You can find more information at the following link: <https://www.iberdrola.com/privacy-policy>