

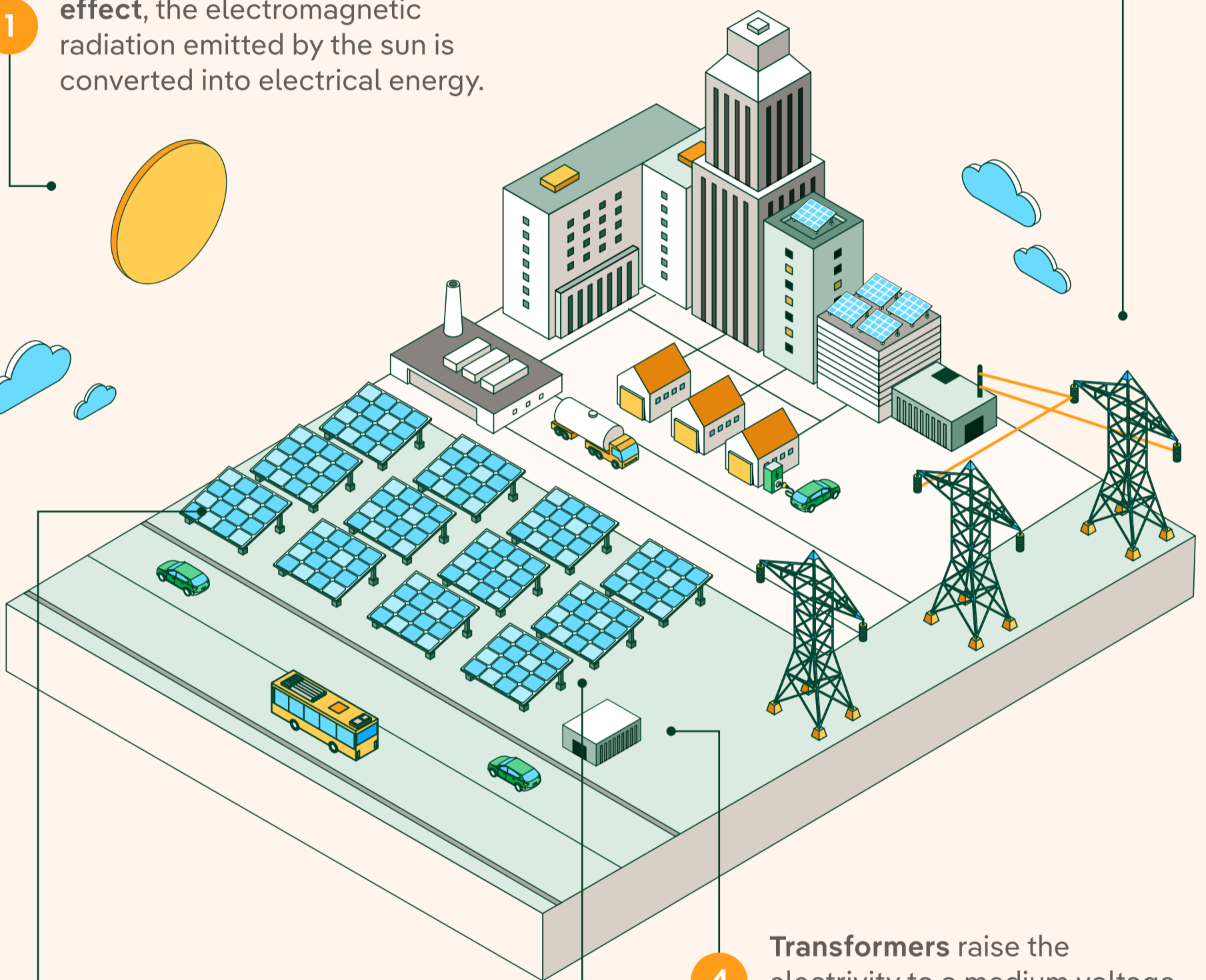
# How do photovoltaic plants work?

1

Thanks to the **photoelectric effect**, the electromagnetic radiation emitted by the sun is converted into electrical energy.

5

The alternating electric energy, now suitable for consumption, is distributed along **transmission lines**.



2

**Photovoltaic panels** are formed from cells that absorb light particles (photons) and release electrons or direct electric current.

4

**Transformers** raise the electricity to a medium voltage (up to 36 kV).

3

The continuous electrical energy produced by the panels is converted into alternating current by the **inverters**.