

What does a digital twin do?



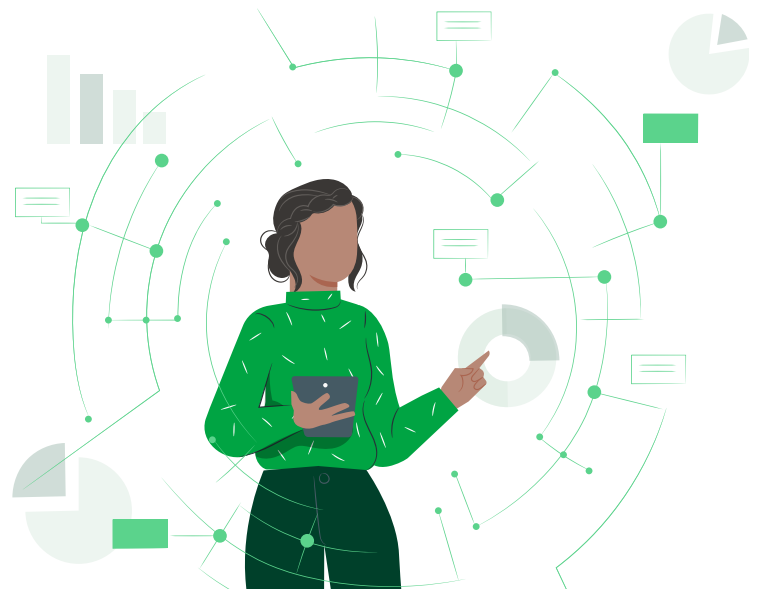
It thinks

It analyses data and **obtains conclusions** through Artificial Intelligence. It learns from experience thanks to Machine Learning technologies.



It senses

It collects data **in real time** through sensors installed in machines or Big Data technologies.



It acts

It solves incidents, **suggests optimisations** and predicts operations. If you add a voice processor, it will interact with the technicians.



Source: KPMG & Deloitte.